

COUNTRYMARK LOG HOMES

“THE LAKE SIDE”



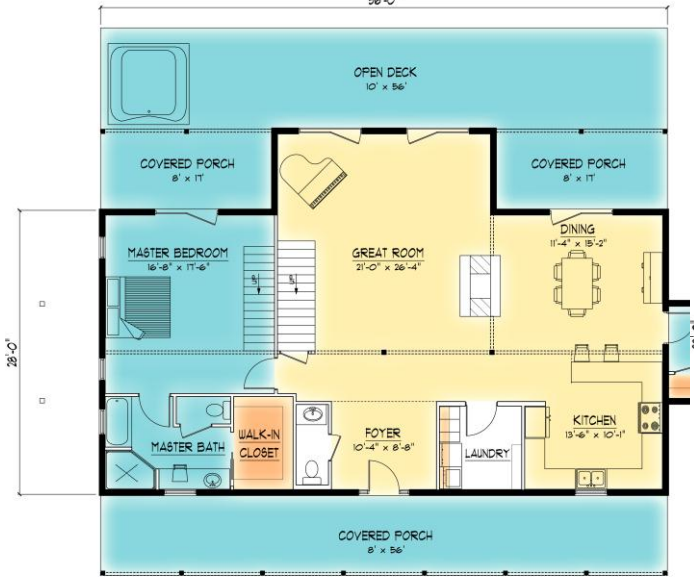
FRONT ELEVATION



LEFT ELEVATION

REAR ELEVATION

RIGHT ELEVATION



FIRST FLOOR PLAN
1,744 SQFT



SECOND FLOOR PLAN
925 SQFT

The *LAKE SIDE* has an unique master suite design utilizing a private staircase to the office/library in the second floor open loft overlooking the master, along with a private second floor covered porch balcony to enjoy the early morning sunrise or sunset. The triple gable dormers all boast triangular king truss glass in the gable ends, and create a stunning entrance being vaulted in the front foyer. The mudroom is designed to allow a connection to a future three car garage where the flow is directed into the kitchen. Additionally, the double-sided see-through fireplace can be enjoyed from both the dining area and the living areas.